

Yampa-White River Region *FastFacts* • Key Takeaways



YAMPA VALLEY
DATA PARTNERS
community + collaboration

Employment

The 12-month Unemployment Average for all three counties has remained the same since July: Moffat's average is 4.1%, Rio Blanco is at 5.3%, and Routt maintains a 2.8 percentage. Despite this stability, all three counties are trending into or have a shortage of jobs.

Real Estate

The number of Foreclosures in Rio Blanco remain steady while they have decreased in Moffat and Routt, resulting in approximately 5 foreclosures in the region in September. Median September Rent has increased at least 3% across all three counties when compared to the Median Rent of September 2015.

Energy

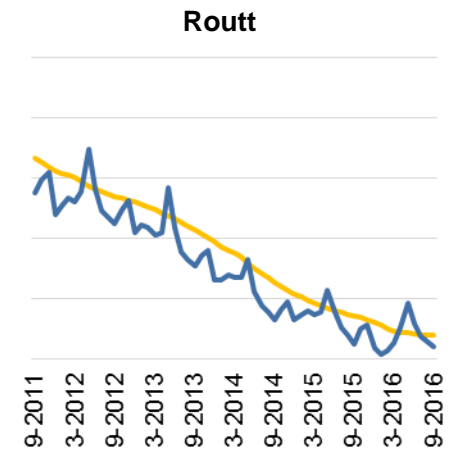
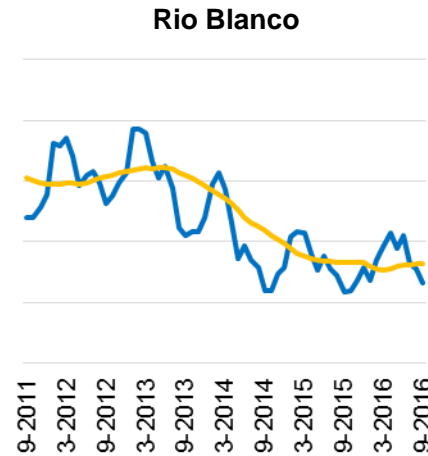
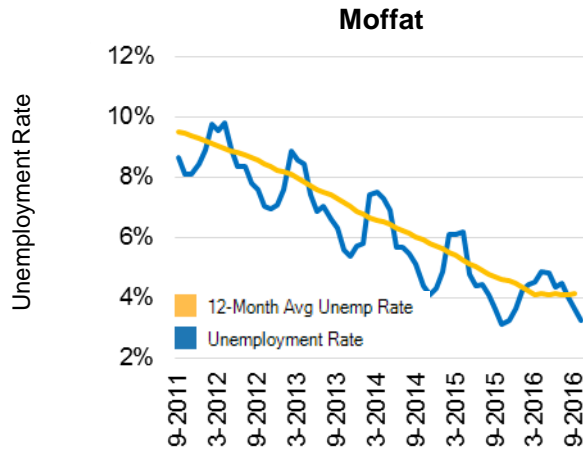
Coal Production continued a regional and statewide decline in September. September year-to-date totals for Routt have declined 33.5% when compared to September 2015. YVDP is still awaiting a chance to speak with a Twentymile representative. Moffat's year-to-date production is down by 32.7%. Trapper Mine deliberately experienced a large decrease in September production due to, "...a planned outage. The plant was performing needed maintenance on the coal receiving facilities. [The outage] had been planned for months and is not a surprise or a reason for concern." Rio Blanco's year-to-date production is down by 46.5%, in part due to a longwall move that ended in January. July 2016 year-to-date Oil Production totals are up for Moffat when compared to July 2015, with year-to-date Gas Production down for all three counties.

Climate

Yamcolo Reservoir September capacity was at 51% while Stagecoach Reservoir maintained a high capacity at 105%. Both rivers are running below 2015 Average Daily Discharge, with The White River near Meeker at 88% of its 10-year average on October 28th. The Yampa River at Steamboat Springs was at 70% of its Average Daily Discharge that same day.

November 4, 2016 Release

Employment



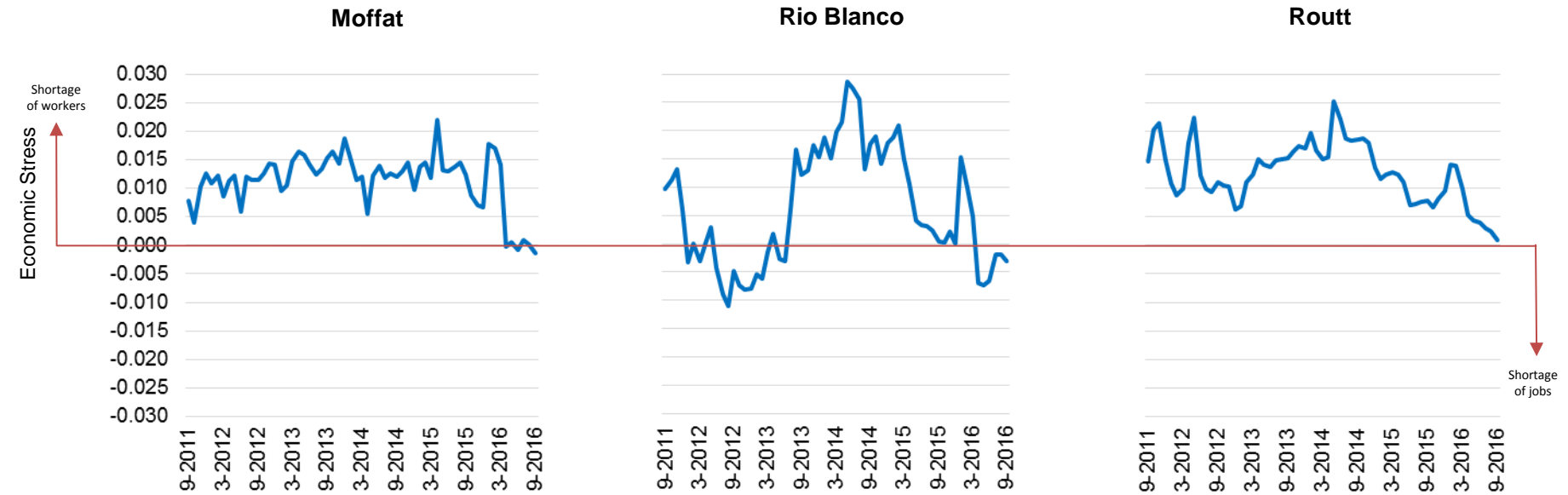
Moffat

Rio Blanco

Routt

Period	Employment	Unemployment	Rate	Employment	Unemployment	Rate	Employment	Unemployment	Rate
9-2015	6,705	218	3.1%	2,736	124	4.3%	13,213	339	2.5%
10-2015	6,861	230	3.2%	2,720	125	4.4%	13,131	407	3.0%
11-2015	6,882	259	3.6%	2,697	134	4.7%	13,130	422	3.1%
12-2015	7,104	315	4.2%	2,700	146	5.1%	14,928	365	2.4%
1-2016	7,058	330	4.5%	2,667	132	4.7%	15,373	341	2.2%
2-2016	7,010	332	4.5%	2,655	152	5.4%	15,327	359	2.3%
3-2016	6,964	356	4.9%	2,614	162	5.8%	14,963	386	2.5%
4-2016	6,842	346	4.8%	2,531	170	6.3%	13,908	435	3.0%
5-2016	6,692	306	4.4%	2,610	160	5.8%	12,994	524	3.9%
6-2016	6,904	326	4.5%	2,696	178	6.2%	14,023	459	3.2%
7-2016	6,815	286	4.0%	2,648	148	5.3%	14,600	414	2.8%
8-2016	6,821	258	3.6%	2,648	142	5.1%	14,638	385	2.6%
9-2016	6,700	227	3.3%	2,609	127	4.6%	13,690	339	2.4%

Economic Stress Indicator (ESI)



Economic Stress Indicator (ESI) = Year-over-year (2016 / 2015) Employed Workers Ratio – Year-over-year (2016 / 2015) Labor Force Ratio

Moffat September 2016 ESI = 0.999 – 1.000 = **--0.001**

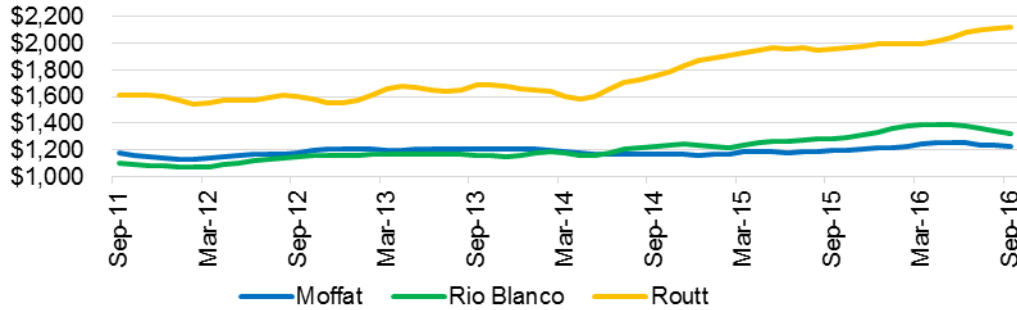
Rio Blanco September 2016 ESI = 0.954 – 0.957 = **-- 0.003**

Routt September 2016 ESI = 1.036 – 1.035 = **+ 0.001**

Note: Optimal balance (least amount of stress) between Employed Workers and Labor Force = 0.00. Too far above 0.00 can be an indicator of a shortage of workers and too far below 0.00 can indicate a shortage of jobs.

Period	Moffat		Rio Blanco		Routt	
	Employed Workers	Civilian Labor Force	Employed Workers	Civilian Labor Force	Employed Workers	Civilian Labor Force
9-2015	6,705	6,923	2,736	2,860	13,213	13,552
9-2016	6,700	6,927	2,609	2,736	13,690	14,029
Ratio	0.999	1.000	0.954	0.957	1.036	1.035

Median Rent

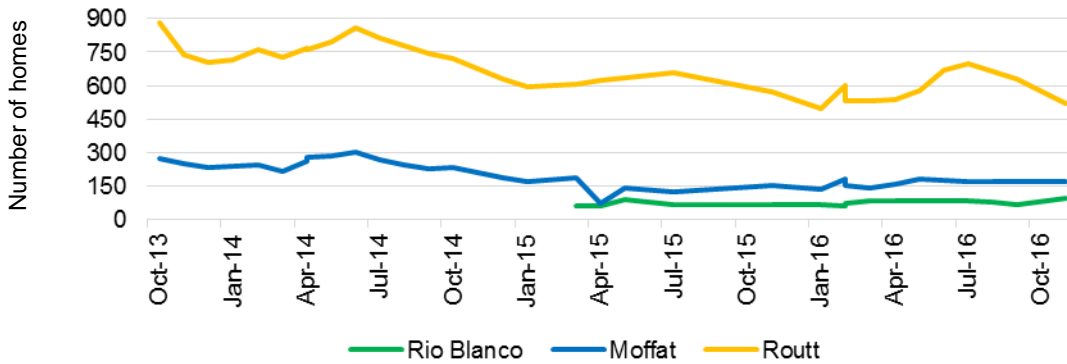


12/2015 - 09/2016 Median Rent Per Month

Period	Moffat	Rio Blanco	Routt
12/2015	\$ 1,211	\$ 1,334	\$ 1,997
01/2016	\$ 1,216	\$ 1,357	\$ 2,000
02/2016	\$ 1,227	\$ 1,377	\$ 1,997
03/2016	\$ 1,240	\$ 1,386	\$ 1,995
04/2016	\$ 1,253	\$ 1,392	\$ 2,015
05/2016	\$ 1,255	\$ 1,386	\$ 2,047
06/2016	\$ 1,250	\$ 1,379	\$ 2,081
07/2016	\$ 1,239	\$ 1,362	\$ 2,099
08/2016	\$ 1,232	\$ 1,343	\$ 2,116
09/2016	\$ 1,227	\$ 1,325	\$ 2,122

Source: Zillow

Homes For Sale

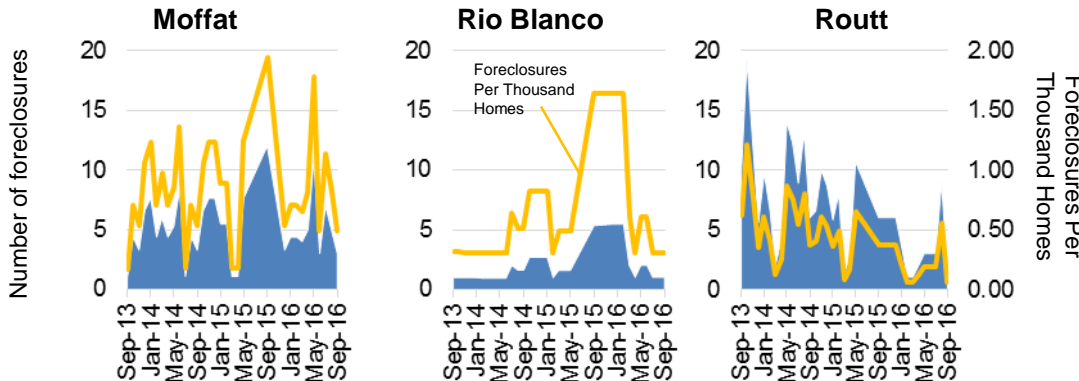


1/2016 - 10/2016 Homes For Sale (# of Homes)

Period	Moffat	Rio Blanco	Routt
01/2016	137	64	496
02/2016	150	70	529
03/2016	141	81	534
04/2016	158	80	536
05/2016	182	82	579
06/2016	177	80	669
07/2016	170	83	701
08/2016	168	76	665
09/2016	168	66	628
10/2016	169	92	519

Source: Zillow

Foreclosures

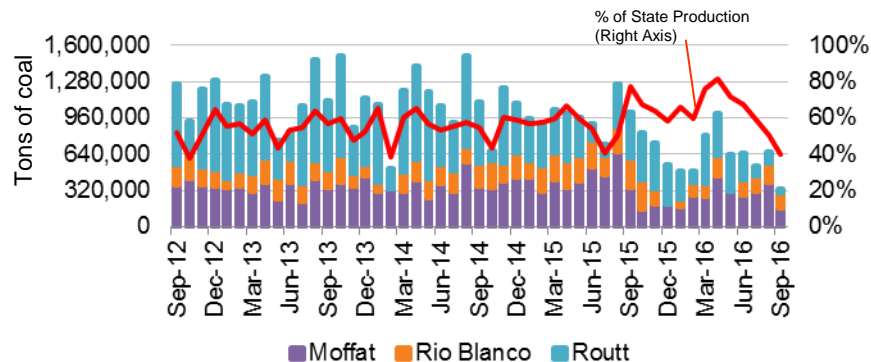


12/2015 - 09/2016 New Foreclosures Per 1,000 Homes

Period	Moffat	Rio Blanco	Routt
12/2015	0.53	1.64	0.37
01/2016	0.71	1.64	0.22
02/2016	0.71	1.64	0.06
03/2016	0.65	0.61	Not available
04/2016	0.81	0.31	0.12
05/2016	1.78	0.61	0.18
06/2016	0.49	Not available	0.18
07/2016	1.14	0.31	0.18
08/2016	0.81	0.31	0.55
09/2016	0.49	0.31	0.06

Source: RealtyTrac.com

Coal Production

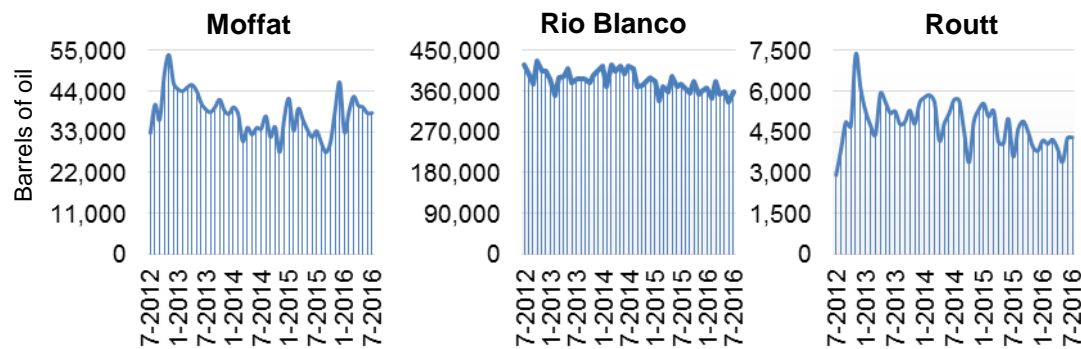


Monthly Coal Production for September 2016

County	Coal Production (Tons)	% of State Production for Sept. 2016	% Change from August 2016	% Change from Sept. 2015	% Change from 12-Month Average
Moffat	159,301	19.3%	-59.0%	-53.3%	-39.6%
Rio Blanco	136,402	16.5%	-18.5%	-47.3%	+13.2%
Routt	33,347	4.0%	-70.0%	-92.0%	-87.2%
Colorado	824,252	100%	-37.5%	-37.5%	-18.5%

Source: Colorado Division of Reclamation Mining & Safety

Oil Production

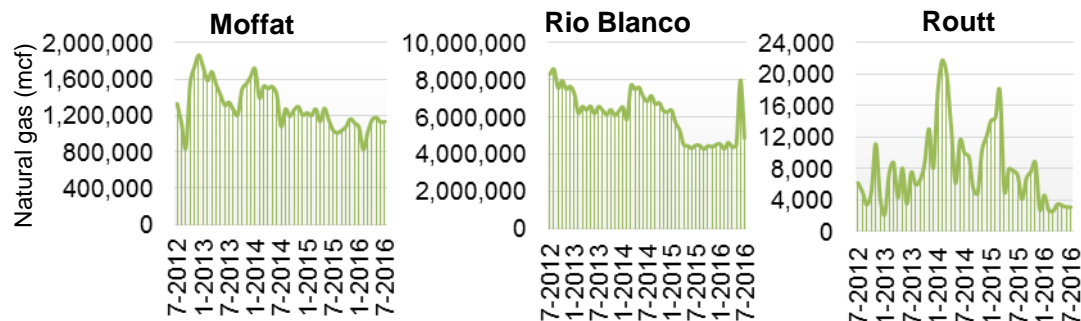


Monthly Oil Production for July 2016

County	Oil Production (Barrels)	% Change from June 2016	% Change from July 2015	% Change from 12-Month Average
Moffat	38,105	+0.1%	+14.8%	+3.3%
Rio Blanco	359,986	+7.5%	-4.2%	0.0%
Routt	4,299	+0.8%	+19.5%	+3.0%

Source: Colorado Oil & Gas Conservation Commission

Gas Production

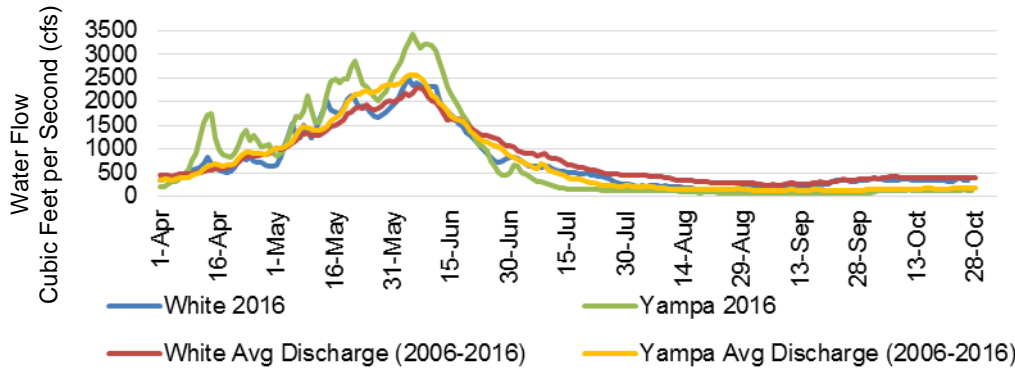


Monthly Natural Gas Production for July 2016

County	Gas Production (mcf)	% Change from June 2016	% Change from July 2015	% Change from 12-Month Average
Moffat	1,132,700	+0.5%	+9.0%	+5.5%
Rio Blanco	4,861,386	-39.0%	+8.5%	+2.0%
Routt	3,069	-0.5%	-57.1%	-30.2%

Source: Colorado Oil & Gas Conservation Commission

Streamflow



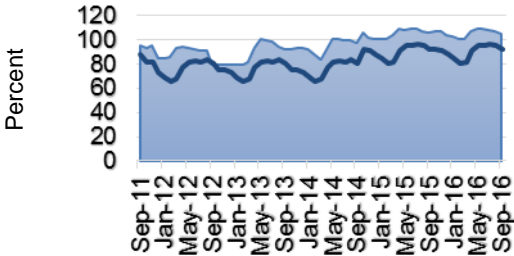
White River at Meeker and Yampa River at Steamboat Springs

River	White	Yampa
Measurement Date	10/28/16	10/28/16
Current Year (2016) Average Daily Discharge (cfs)	340	128
Previous Year (2015) Average Daily Discharge (cfs)	365	210
Average Daily Discharge % of Average (2006-2016)	88%	70%
Average Daily Discharge (2006-2016) (cfs)	385	183

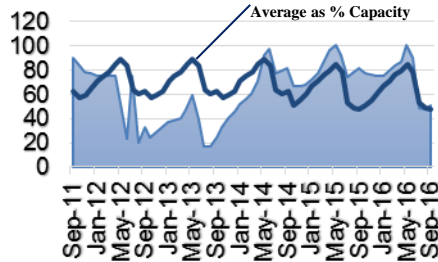
Source: USDA Natural Resources Conservation Service (NRCS) National Water & Climate Center

Reservoir Levels

Stagecoach



Yamcolo



Stagecoach and Yamcolo Reservoir Levels

Reservoir	Stagecoach	Yamcolo
Month	September 2016	September 2016
September (2016) as % Capacity **	105%	51%
Average as % Capacity	92%	48%
September (2015) as % Average **	115%	169%
September (2015) as % Capacity	106%	82%

Source: USDA Natural Resources Conservation Service (NRCS) National Water & Climate Center